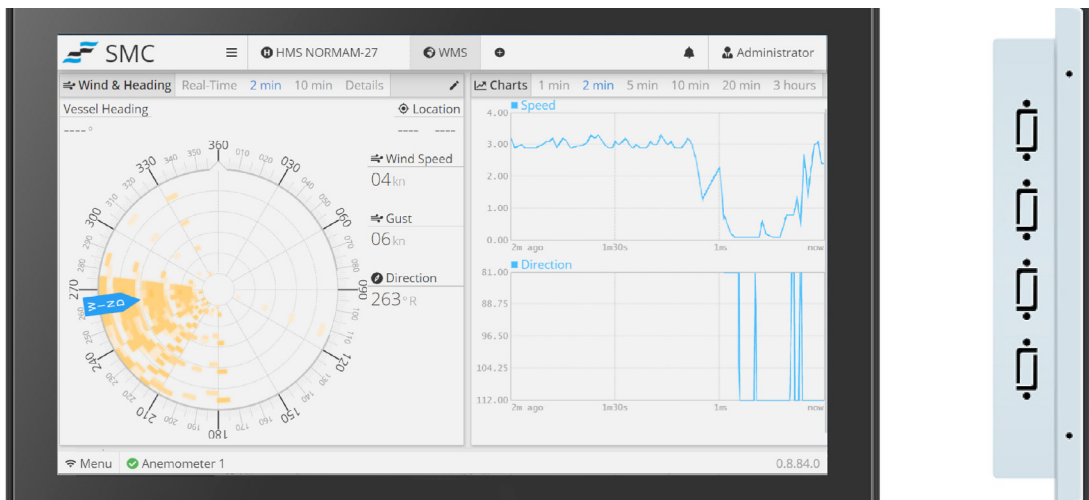


# SMC-1310 Panel Display

for environmental and meteorological monitoring



The SMC Panel Display, SMC-1310 is a cost-effective solution for data logging, processing and graphically display of a range of meteorological data. Various external connection options are available for Serial RS232/RS422/RS485 and Ethernet UDP instruments.

## General

The SMC-1310 is used in applications where collection of data from various measurement instruments are required. The data is logged, processed and includes an easy use graphical user interface for data display and configuration of the system.

The SMC panel display system is a reliable and cost-effective solution for environmental and meteorological monitoring. It is delivered with the processing and display software. The system is modular and can be built to connect with a wide range of external devices with various built-in communication protocols.

The graphical display and logged data can be accessed remotely over the LAN via a web interface using a standard browser.

## Display

The data is presented in a 10.1 inch, high resolution 1280x800, capacitive touch screen with a 800 cd/m<sup>2</sup> brightness for usage in bright environments. The display has a 75x75mm VESA mounting for wall mount fixation.

## Instrument integration

Meteorological instruments from a wide range of manufacturer can be integrated with the display system to meet client specifications. The SMC panel display system can receive and process data using built-in Serial RS232/RS422/RS485 and Ethernet inputs.

Each Instrument that is interfaced with the SMC panel display system is managed as a unique module that can be added or removed to different applications that can then be selected for a specific user or operational need.

## Key Features

- Industrial design
- Display system Accessible over LAN/WAN as standard
- Multiple external outputs
- 8GB emmc for logging
- Security Roles
- Graphical display

## External systems

The SMC-1310 has the functionality to communicate with third-party systems via Modbus RTU/UDP and SNMP protocol. Features to transfer data to a remote SMC system are available.

User settable alarms are available for all parameters with outputs to email and system display messages.

## Data Log

All data is stored in the 8 GB built-in emmc memory drive. The data is time stamped and stored in a SQL database. The data can be viewed using the built in log view and can be exported to third party systems using a comma separated text file file.

## About SMC

SMC is an ISO9001:2015 quality management certified company, manufacturing motion sensors and system integration software packages, environmental and weather monitoring systems.

# Specification

## System Specification

Processor	ARM based processor
Operating System	Linux
Storage	8 GB
RAM	2 GB
Display size	10.1 inch
Brightness	800 cd/m2
Aspect Ratio	16:10
Resolution	1280x800
Viewing angle	89 degrees
Touch Type	Capacitive
Mounting	VESA 75x75mm

## External Output

SNMP, Modbus TCP/RTU, Automatic Data transfer over Internet to remote locations

## Security Roles

Administrator, Operators, Technicians, Limited

## Logging

Logging of all interfaced and processed parameters, Usage approx. 10 GB data per year  
Built in Backup features

## Interface Modules Built-in

Serial 4xRS232 or 2xRS422/485  
USB Type A for data export  
Ethernet

## Environmental

Operating Temperature Range 0° to +50° Celsius  
IP rating IP22  
Power requirements 12-36 VDC  
Power Consumption 20W

## Support

Free Technical remote support

